

APPLICATION NOTE

ONLine Access

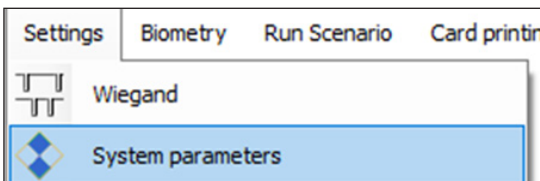
Before installing the readers in the system, they have to be configured. Follow the procedure bellow and then mount the readers.

A059

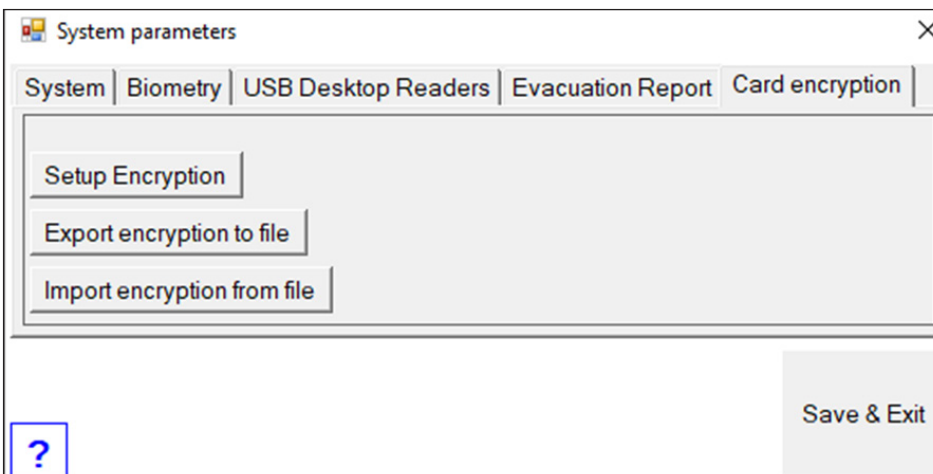
1. Generate encryption file

Cards encryption can be used with Mifare Desfire cards. Encryption provides higher level of security where card is accepted by its encrypted content instead of built in card serial number. You can skip this step if the encryption of the Mifare Desfire cards will not be used.

Click on **Settings/System** parameters menu



Open Card encryption tab in **System parameters** window

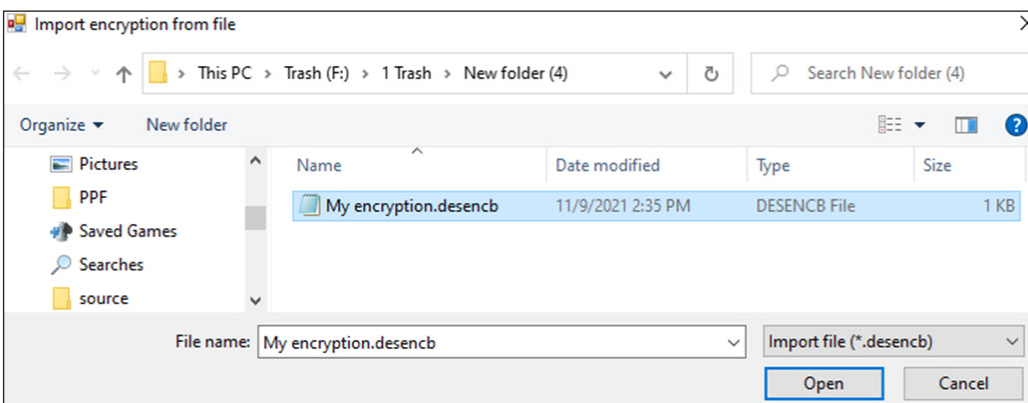


a. To create new encryption

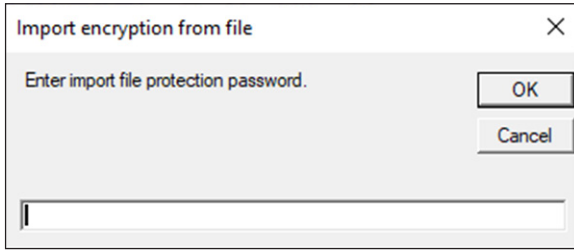
- Click on **Setup Encryption** tab.
- Enter required parameters or click on **Generate** tab to load random values.
- Click on **Save** tab

b. To import encryption from other system

- Click on **Import encryption** from file tab.
- Select the encryption file (*.desencb)



- Click on **Open** tab
- Enter the encryption file password

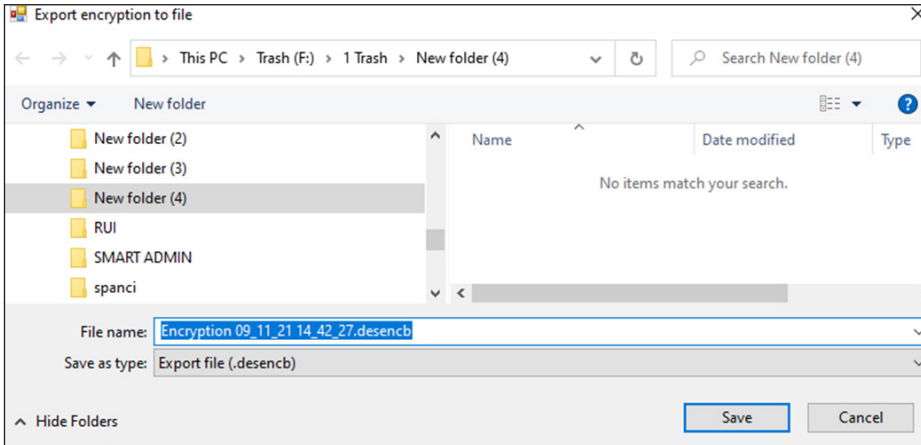


- Click on **OK** tab

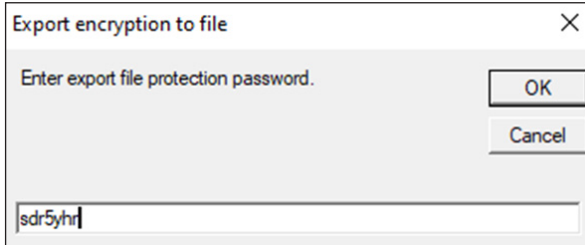
c. To export the encryption to file

After creating the encryption, you can export it to file to be used in other systems.

- Click on **Export Encryption to file** tab.
- Select file location and name the file



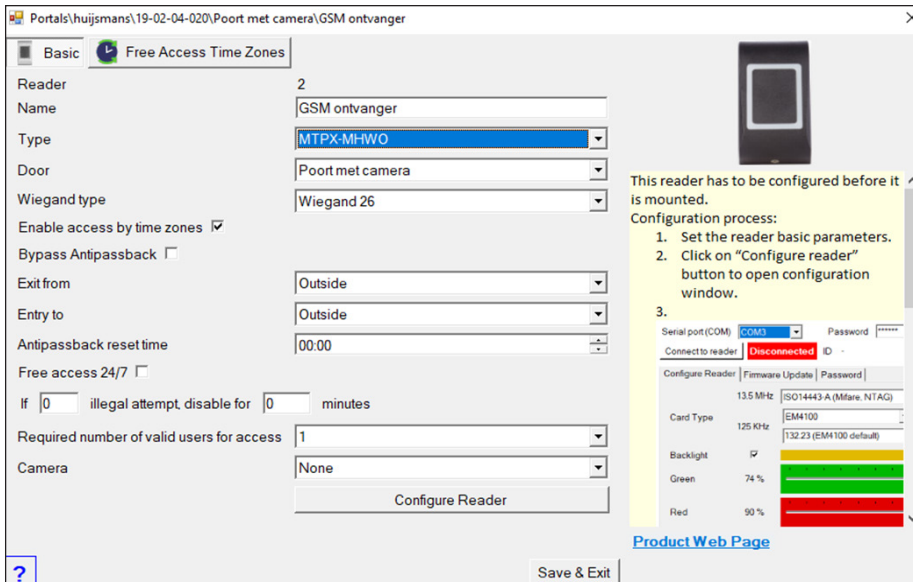
- Click on **Save** tab
- Enter password for file



- Click on **OK** tab

2. Reader configuration

- Make sure the controllers are added in the system
- Open the reader properties

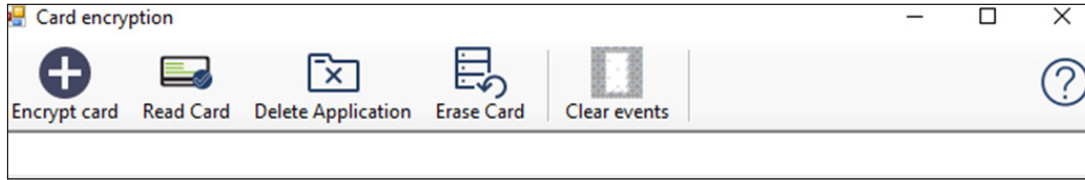


- Select the correct reader type
- Follow the instruction on the right side

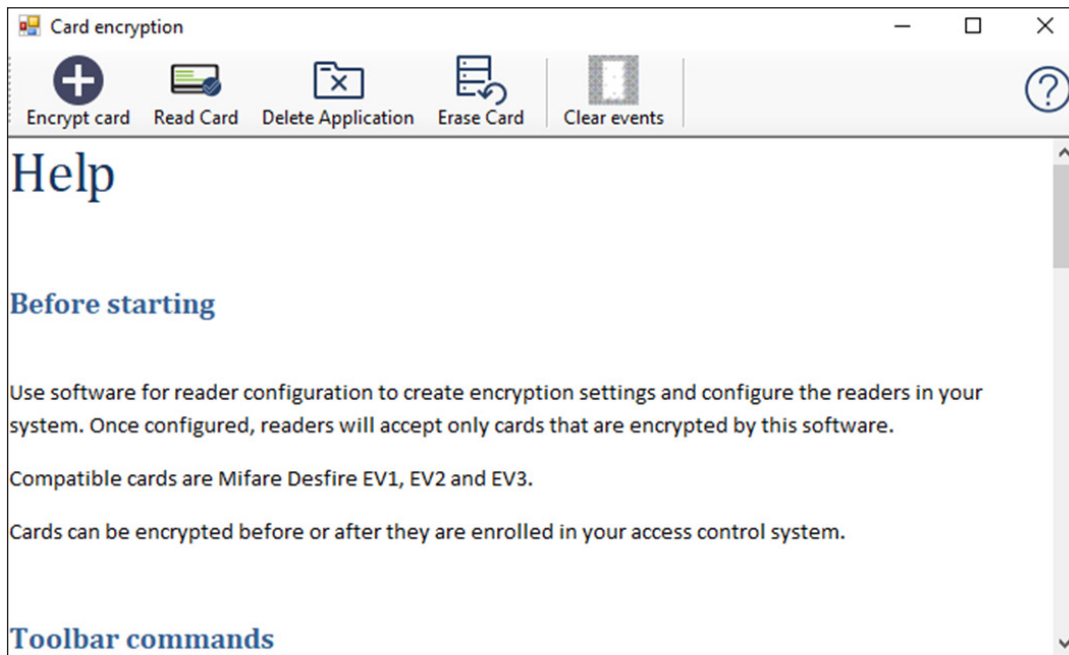
3. Encrypting cards

Readers that are configured with enabled Mifare Desfire encryption will accept only Mifare cards that are encrypted. Readers that are configured with disabled Mifare Desfire encryption will accept all Mifare cards.

- Open **Users** management window
- Connect desktop reader to PC to enable **Encrypt card** tab
- Click on **Encrypt card** tab to open Card encryption window



- Click on the help tab (?) to open the manual



- Follow the manual to manage encrypted cards